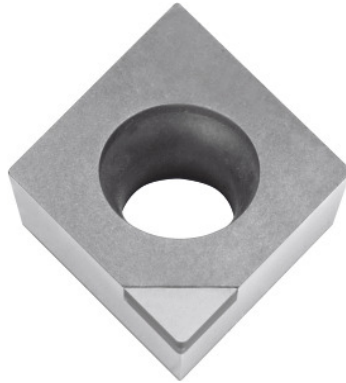


**Garant**

**Indexable insert for turning CCGW 060204 FN, PKD (7°), Cutting edge version: N**

**Order data**

Order number	265805 N
GTIN	4045197447692
Item class	21L

**Description****Version:**

**PCD** – Polycrystalline diamond, fine grain. Neutral, without chip breaker.

**Application:**

For aluminium, aluminium alloys, non-ferrous metals, plastics, composite materials, titanium alloys, sintered metals.

**Technical description**

Cutting speed $v_c$ for G(C)RP	150 - 600 m/min
Cutting conditions	continuous
Corner radius	0.4 mm
Cutting speed $v_c$ for non-ferrous metals	300 - 1500 m/min
Cutting depth $a_p$	0.1 - 2.5 mm
Cutting speed $v_c$ for alu < 10 % Si	300 - 2000 m/min

Feed f	0.03 - 0.4 mm/rev.
Cutting edge version	N
Grade	PCD
Finishing/roughing assignment	Skrubbearbejdning-sletbearbejdning
Tool material	PCD
ISO code indexable insert	CCGW 060204 FN
Number of changes/inserts	1
Product name attribute	PCD
Rake	0 degrees
Type of product	Indexable insert for turning